

HANNAH ST



LEGEND

- SITE BOUNDARY
- EXISTING TREE RETAINED
- EXISTING TREE REMOVED
- PROPOSED TREE
- 20.0 EXISTING CONTOUR
- PROPOSED NEW CONTOUR
- EXISTING SPOT LEVEL
- +149.50 PROPOSED SPOT LEVEL
- PUBLIC PAVING
- PRIVATE PAVING
- RETAINING WALL
- MASS PLANTING BEDS
- TURF

E	Revised for D.A. Submission	18.06.12
D	Revised for D.A. Submission	20.04.12
C	Revised for D.A. Submission	13.06.11
B	Revised for D.A. Submission	18.10.11
A	For D.A. Submission	07.03.11
Issue	description	date

taylor
brammer
landscape architects

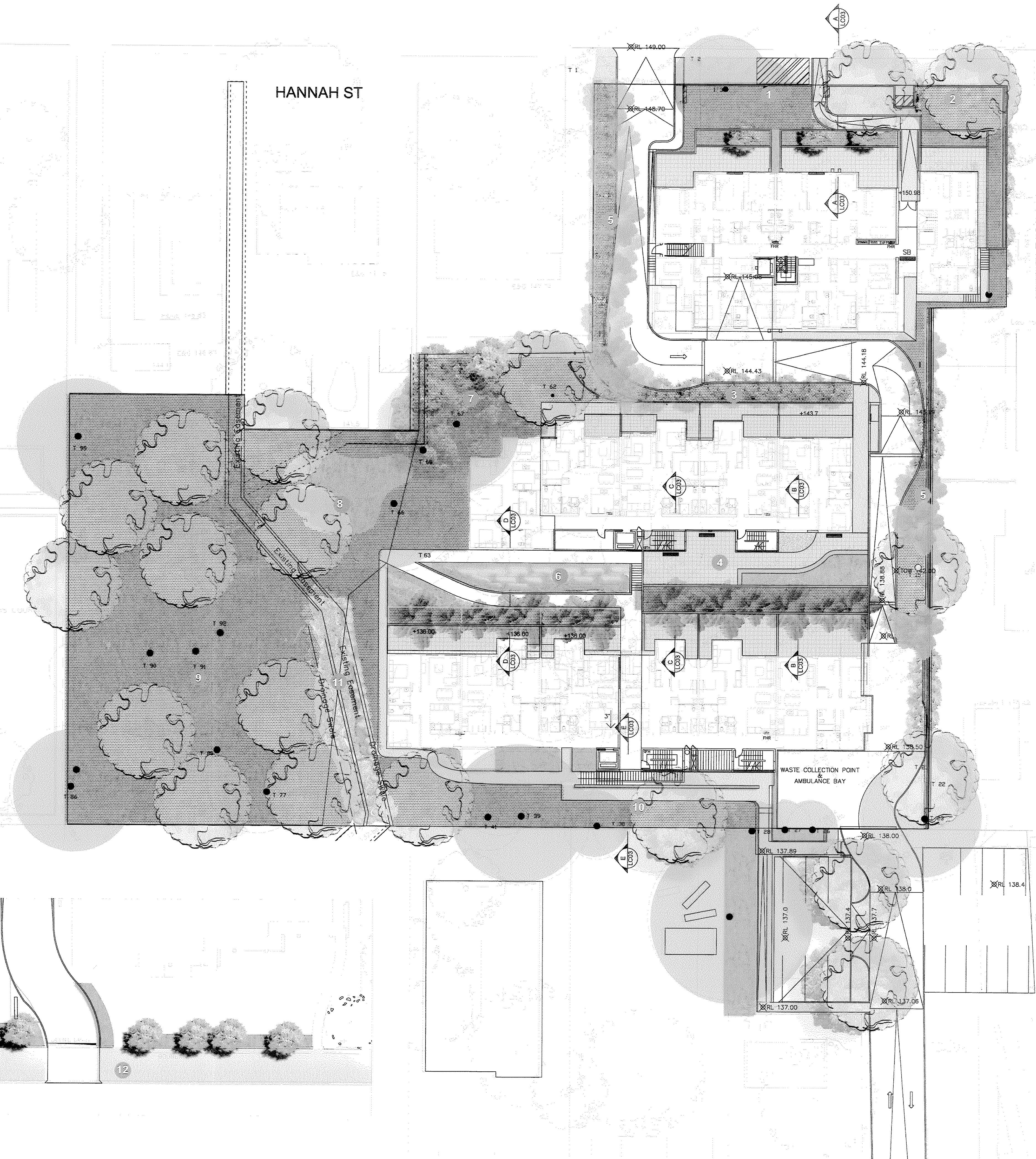
taylor brammer landscape architects pty ltd
austlianne
28 Moore Street, Austlianne, NSW, Australia, 2615
tel: (02) 4287 5088 fax: (02) 4287 4826
e: southcoast@taylorbrammer.com.au

project:
UNITING CARE BEECROFT RESIDENTIAL

drawing title:
Landscape: Context Plan

scale: 1:200@B1	drawn: JH	drawing no:	revision:
date: 20 Jan 11	designed: JB	LC01	D
job no.: 10-092W	checked: JB		
0 2 4 8M			

Copyright of Taylor Brammer Landscape Architects Pty Ltd
Figured dimensions shall be taken in preference to scaling.
The contractor shall check all dimensions on site before commencing work.



INDICATIVE PLANT LIST
General planting

ID	BOTANICAL NAME	COMMON NAME	SPREAD	HEIGHT
TREES				
	<i>Acer rubrum</i> 'Bowhall'	Red Maple	5m	10m
	<i>Eleocharis reticulata</i>	Blueberry Ash	8m	8-10m
	<i>Eucalyptus saligna</i>	Sydney Blue Gum		20-30m
	<i>Eucalyptus paniculata</i>	Grey Ironbark		15-20m
PALMS / FERNS				
	<i>Cyathea australis</i>	Rough Tree Fern	3-5	5m
	<i>Dicksonia antarctica</i>	Soft Tree Fern	1-2	2m
	<i>Doodia aspera</i>	Rasp Fern	0-0.5	300mm
	<i>Blechnum cartilagineum</i>	Gristle Fern	50-1m	1m
SHRUBS				
	<i>Buxus microphylla</i>	Japanese box	1m	1m
	<i>Syzygium paniculatum</i>	Lilly Pilly	2-4	8m
	<i>Pittosporum revolutum</i>	Rough-fruit Pittosporum	1-2	2m
GROUND COVER				
	<i>Billardiera scandens</i>	Apple Berry	500-1.5m	1.5m
	<i>Dianella caerulea</i>	Paroo lily	0-0.5	500mm
	<i>Lomandra longifolia</i> var. <i>longifolia</i>	Spiny Headed Mat Bush	0.6-1	800mm
	<i>Poa affinis</i>		0-0.5	300mm

Blue Gum Forest Understorey Planting

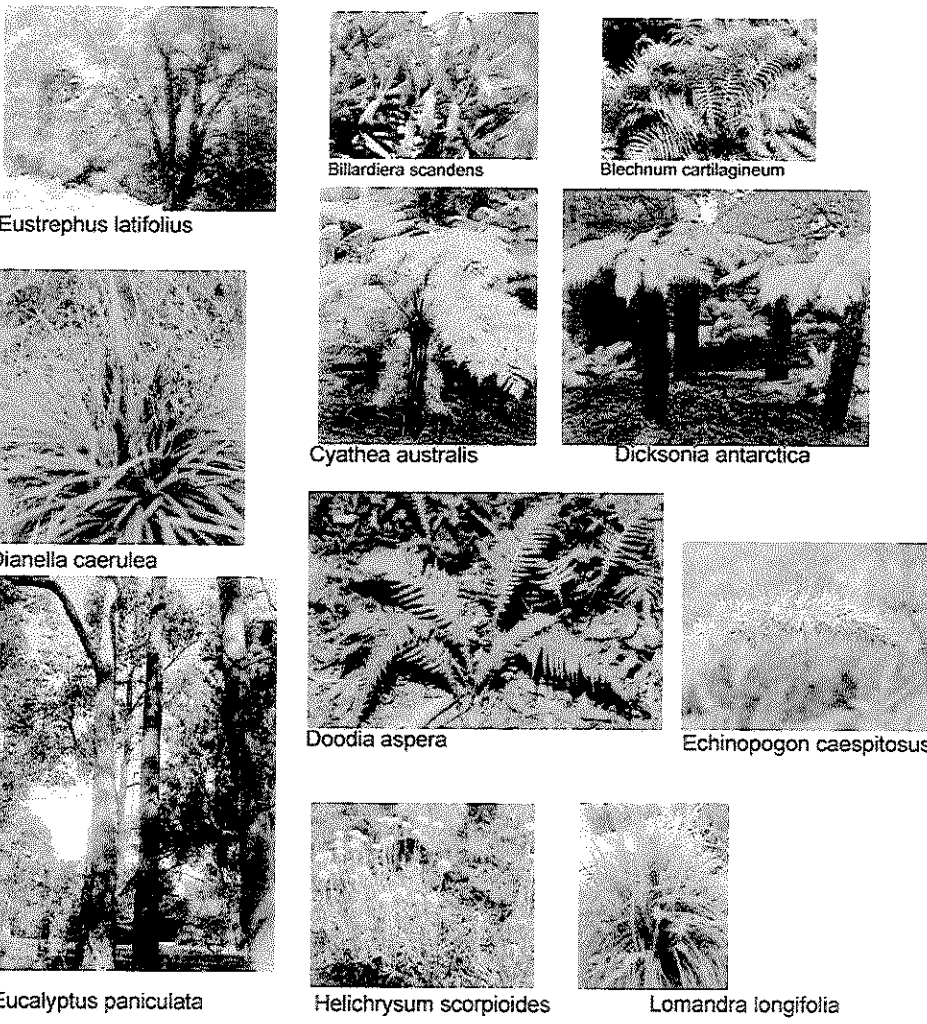
ID	BOTANICAL NAME	COMMON NAME	SPREAD	HEIGHT
PALMS / FERNS				
	<i>Doodia aspera</i>	Rasp Fern	0-0.5	300mm
SHRUBS AND GROUND COVER				
	<i>Billardiera scandens</i>	Apple Berry	500-1.5m	1.5m
	<i>Brethynia angustifolia</i> var. <i>angustifolia</i>	Stiff Daisy	0.3m	0.3m
	<i>Dianella caerulea</i>	Paroo lily	0-0.5	500mm
	<i>Echinopogon caespitosus</i>	Tufted hedgehog grass	1m	1m
	<i>Ericotria marginata</i>	Panic Grass	0-0.5	300mm
	<i>Eustrephus latifolius</i>	Wombat Berry	1.5-2m	8m
	<i>Helichrysum scopioides</i>	Button Everlasting Daisy	30cm	15-30cm
	<i>Lomandra longifolia</i> var. <i>longifolia</i>	Spiny Headed Mat Bush	0.6-1	800mm
	<i>Opismenus aemulus</i>		0.5-	300mm
	<i>Poa affinis</i>		0-0.5	300mm
	<i>Themeda australis</i>	Kangaroo Grass	0-0.5	300mm

DESIGN NOTES

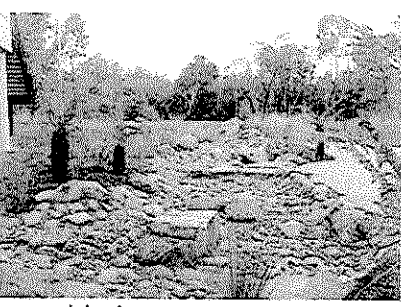
- EXISTING EUCALYPTS TO BE RETAINED. AN ADDITIONAL *Eucalyptus paniculata* HAS BEEN PLANTED TO MATCH THE EXISTING STREET FRONTAGE. LAYERING OF THE LANDSCAPE TO INCLUDE *Acer rubrum* 'Bowhall' AND *Buxus microphylla* RESPECT THE EXISTING BUILT ENVIRONMENTAL DESIGN PATTERNS OF BOTH BUILT FORM AND CULTURAL LANDSCAPE PLANTINGS OF THE STREET
- SCREEN PLANTING ADJACENT TO HERITAGE LISTED PROPERTY STRENGTHENS CURTLAGE TO HERITAGE PROPERTY
- PRIVATE COURTYARD HAVE BEEN PLANTED WITH *Syzygium* THEY HAVE BEEN PLANTED TO PROVIDE PRIVACY FOR BOTH RESIDENTS AND NEIGHBOURS
- BREAKOUT SPACE FOR RESIDENTS WITH AWNING ABOVE. A SENSORY GARDEN WITH SEATING WALL FOR RESIDENTS PROVIDING VIEWS ACROSS TO THE SOUTH-WEST OF THE EXISTING REMNANT BLUE GUM FOREST AND DRY CREEK BED
- THE DRIVEWAY HAS BEEN REDUCED TO ALLOW MORE SCREEN PLANTING TO THE EAST AND WEST BOUNDARIES ADJACENT THE DRIVEWAY. BLUEBERRY ASH SYZZIUM AND OTHER NATIVE TREES AND SCREENING SHRUBS ARE PROPOSED FOR THESE AREAS. TO PROVIDE A DENSE GREEN WALL FROM THE NEIGHBOURING PROPERTIES TO 8m-10m HIGH.
- SANDSTONE ROCK EMBANKMENT PLANTED WITH ENDEMIC GRASSES. A 1:20 PATH LINKS BUILDING 2 AND 3. FERNS SCREEN PRIVATE COURTYARDS FROM ABOVE
- EXISTING TREES WITH UNDERSTOREY PLANTING OF ENDEMIC GRASSES AND SHRUBS
- EXISTING TREES RETAINED WITH UNDERSTOREY PLANTED WITH ENDEMIC PLANTS STOCK GROWN FROM SEED COLLECTED ON SITE AND NATIVE TURF TO BE PLANTED
- EXISTING REMNANT BLUE GUM HIGH FOREST WITH A PLANTED UNDERSTOREY OF ENDEMIC GRASSES.
- INFORMAL ACCESS PATH WITH EXISTING TREES AND ADDITIONAL PLANTINGS OF ENDEMIC SPECIES BETWEEN BUILDING 3 AND THE BOUNDARY
- EXISTING DRAINAGE SWALE DEVELOPED INTO A NATURAL SYSTEM WITH ROCKWALL AND NATIVE GRASSES AND GROUND COVERS
- COPELAND ST ENTRY TO BE REVITALISED. ADDITIONAL LANDSCAPE TO SUPPLEMENT EXISTING TREES AND SHRUBS TO CREATE APPROPRIATE ENTRY TO SITE.

NOTE: COMMUNAL OPEN SPACE = 3947M² 57% OF TOTAL SITE
ACTIVE RECREATION= 543M²

PLANT IMAGES

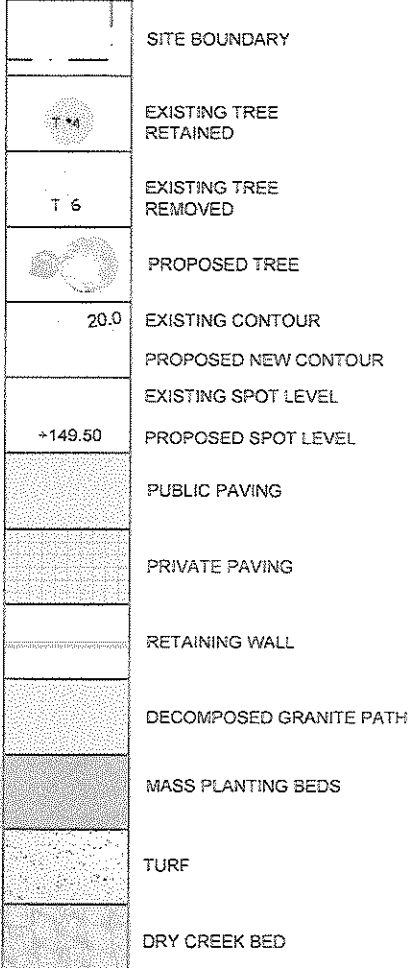


MATERIALS



Dry creek bed

LEGEND



NOTE:
FOR ALL TREE RETENTION AND
REMOVAL LOCATIONS PLEASE
REFER TO ARBORIST REPORT.

G	Revised for D.A. Submission	18.06.12
F	Revised for D.A. Submission	20.04.12
E	Revised for D.A. Submission	17.03.12
D	Revised for D.A. Submission	16.04.12
C	Revised for D.A. Submission	15.04.12
B	Revised for D.A. Submission	14.03.12
A	For D.A. Submission	07.03.11
Issue	description	date

taylor
brammer
landscape architects

taylor brammer landscape architects pty ltd
28 Moore Street, Austinmer, NSW, Australia, 2515
tel: (02) 4287 5055 fax: (02) 4287 4826
e: southcoast@taylorbrammer.com.au

project: UNITING CARE BEECROFT RESIDENTIAL

drawing title: Landscape: Concept Plan

scale: 1:200@B1	drawn: JN	drawing no.: LC02	revision: G
date: 20 Jan 11	designed: IB	checked: IB	
job no.: 10-092W			

0 2 4 8M

Copyright of Taylor Brammer Landscape Architects Pty Ltd.
Figured dimensions shall be taken in preference to scaling.
The contractor shall check all dimensions on site before commencing work.

